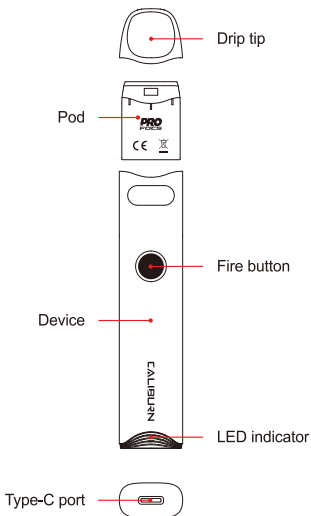


CALIBURN

CALIBURN A3 Pod System

User Manual

Illustration



Quick Guide

1. Take the pod off the device, remove the insulating film from the bottom of the pod, and put it back.
2. Remove the drip tip and fill e-liquid through the red filling port. Let the pod sit for 10 minutes before use.
3. Press the fire button 5 times in 2 seconds to turn on the device. Draw or press the fire button to vape.

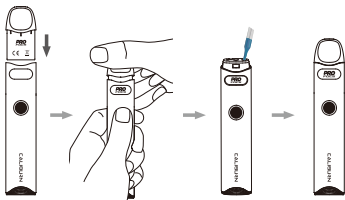
Specifications

- Materials: PCTG, Aluminium Alloy
- Dimensions: 109.8 mm × 21.3 mm × 11.7 mm
- Net Weight: 31 g
- E-liquid Capacity: 2 ml
- Output Power: Maximum 13 W
- **Pod Specification:**
FeCrAl Meshed 1.0 Ω CALIBURN A3 Refillable Pod
- Battery Capacity: 520 mAh

Instructions

1. Pod filling and replacement

- Take the pod off the new device, remove the insulating film at the bottom of the pod, and put the pod back.
- Remove the drip tip in the direction shown in the following graphic.
- Fill the e-liquid into the red filling port, put the drip tip back, and the clicking sound hints at proper installation.
- Let the pod sit for 10 minutes before use.
- Please remove the used pod from the device and change a new one for the pod replacement.



Attention:

- a. Fill the e-liquid into the red port. Please don't fill through the middle airway. Put the drip tip back as soon as the filling is done and make sure it is properly installed to prevent e-liquid leakage.
- b. Let the pod sit for 10 minutes after the first filling to avoid coil burning.
- c. Please make a timely refilling when the e-liquid is under MIN level.

2. Turn on/off

Press the fire button 5 times in 2 seconds to turn on/off the device. The LED indicator will flash 3 times in green when you turn the device on and 3 times in red when you turn it off.

3. Vaping

Vape by button or drawing when the device is powered on, and the LED indicator light stays on.

4. Button Ignition function Lock

Press the fire button 2 times in 2 seconds to lock the ignition function, and the light will flash in red twice as a hint.

Press the fire button 2 times in 2 seconds to unlock the ignition function, and the light will flash in green twice as a hint.

5. Battery level indication

During vaping, a green light indicates the battery level is over 60%, a blue light indicates the battery level is 30%-60%, and a red light indicates the battery level is under 30%. The light flashes 10 times in red to indicate the battery level is too low and the device will stop output.

6. Charging

The light flashes when connecting the Type-C cable. A green light indicates the battery level is high, a blue light indicates the battery level is medium, and a red light indicates the battery level is low. The green light will stay on when the charging is done.

7. Protection and Indication

- a. Short-circuit protection: When short-circuit occurs, the light will flash 3 times in red when vaping, and the device will stop output.
- b. Low voltage protection: When the device is at low power, the light will flash 10 times in red, and the device will stop output.
- c. Overtime protection: The light will flash 5 times in green to indicate an over 8-second vaping, and the device will stop output.
- d. Open-circuit protection: when an open-circuit occurs under a no pod or disconnection situation, the light will flash 3 times in blue, and the device gives no output during vaping.

ATTENTION:

1. Please charge with the certified power adaptor (5V/2A) and USB cable.
2. Please remove the pod from the device and store it separately when you travel by air, for the air pressure change may cause leakage.
3. Avoid high temperature, low temperature, flammables, explosives, water, and humid environment during the use or storage of the product. Please do not keep the product with hard objects to avoid damage. Please charge the device at least once a month.

UWELL

©2022 By SHENZHEN UWELL TECHNOLOGY CO., LTD.

All Rights Reserved.